

Ancillaries Equipment



Ancillaries Equipment

soilmec®
Drilling and Foundation Equipment



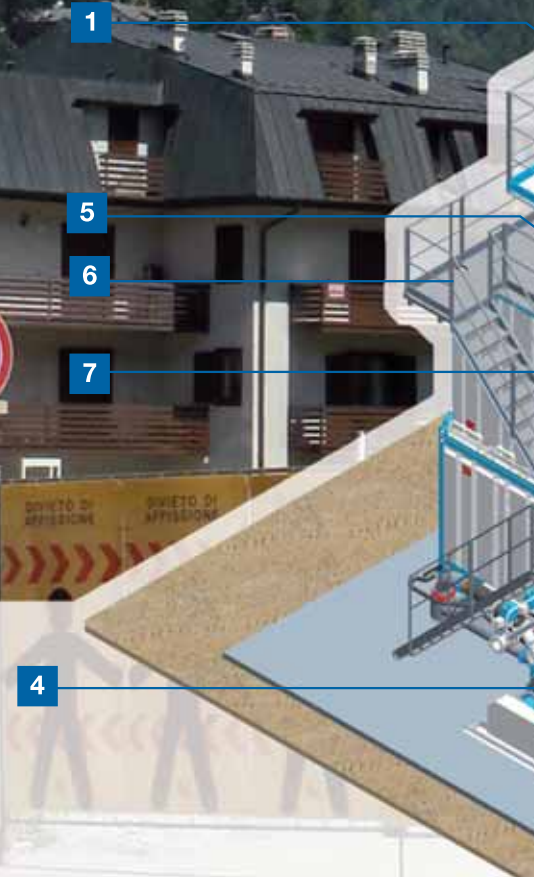
Features

In decades of activity, the know-how acquired by the Trevi Group with regard to the execution of diaphragm walls by means of hydromill, as well as the direct experience in the oil field, have allowed the Group's R&D to develop a new Mud Treatment System (SMT-500) which covers the most updated and advanced technical solutions, in order to offer a dedicated company unit to be used as alternative to the conventional ones.

The problem linked to the space availability in metropolitan sites is a recurrent reality and, for this reason, our experience has allowed the execution of a unit which covers the system of tanks and mud stirring in order to reduce as much as possible the overall dimensions on the map and gain vertical space.

The unit is assembled on the top of the tanks and it is conceived in such a way as to be compact and functional with regard to the operator's activities. The innovative design of the mud treatment unit, which is characterised by the remarkable height at which separated solids are unloaded, has also allowed to develop the project 'Detritus Management' (SDM) where the excavation debris are destined to be piled up. This unit is schematically characterized by a hopper provided with a controlled unloading system through a screw conveyor placed on the bottom.

The installation in the doorway allows to transit behind the hopper of the vehicles in order to make automation possible during the loading phase. The debris' storage capacity is sufficient to guarantee the unit activity: the most complete version have a storing capacity of 35mc. This solution has the merit of avoiding the construction of storing tanks during the works, but, especially, of further reducing the overall encumbrance within the site and its increased cleaning requirement. Moreover, the adoption of the SDM allows elimination of a rig (excavator or bucket) and relevant operator, hence cutting site costs.



For both exhibited units, the "folding" solution allows the maximum optimization of volume and transport logistics, but without compromising the easy and quick set-up on the site.



2

3

8

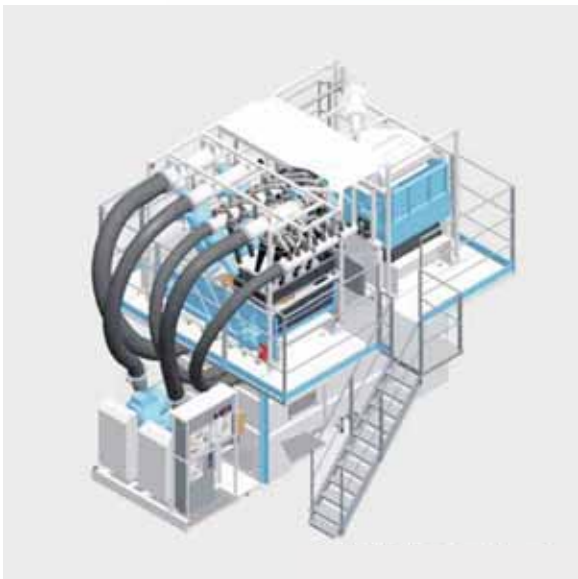
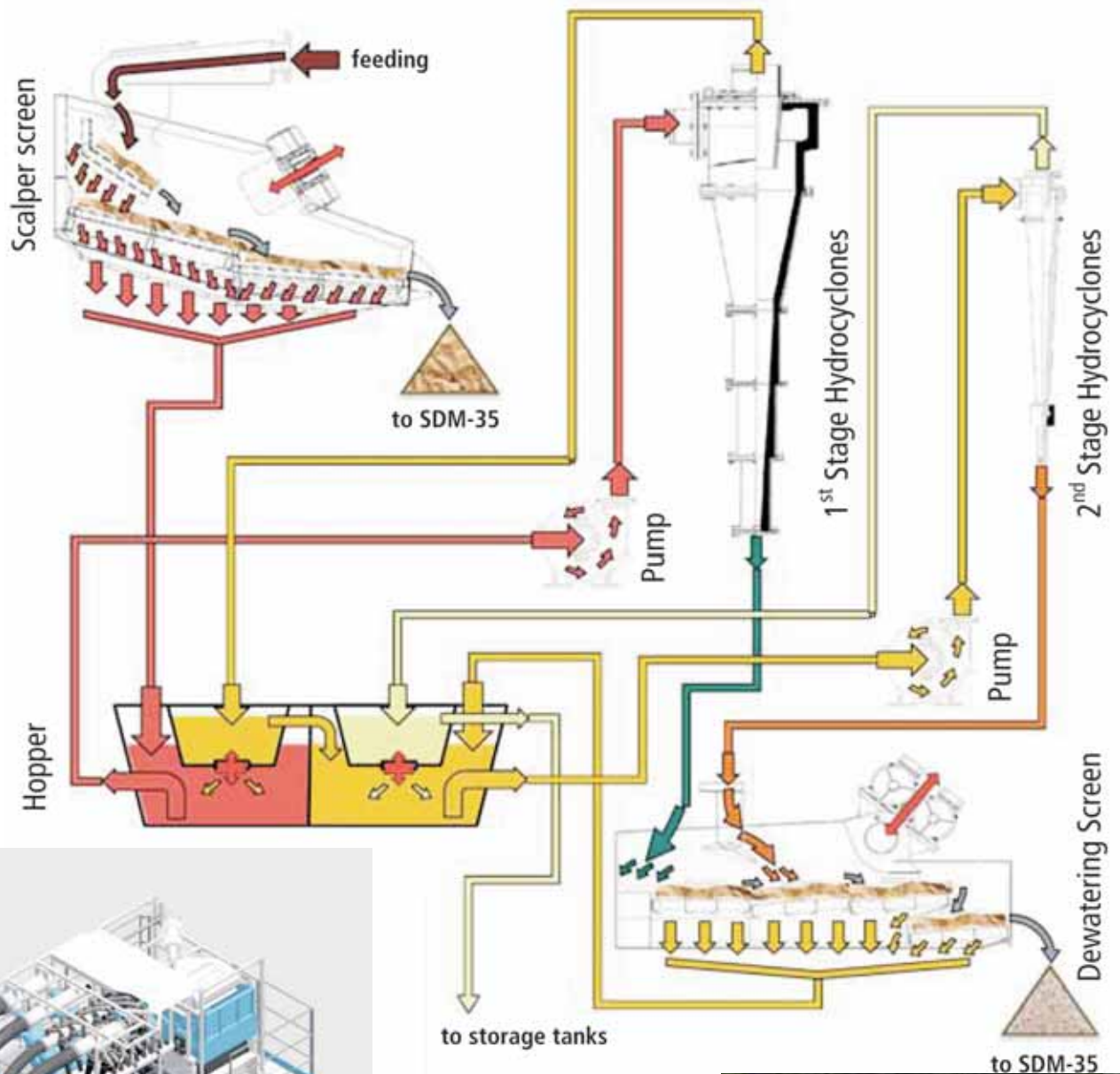
- 1 Scalper unit
- 2 Mud cleaner group
- 3 Hydrocyclones pump
- 4 Pumping group
- 5 Hopper
- 6 Ladder acces
- 7 Extended tanks
- 8 Self-weighing hopper

Main vantages

- optimized volume transport
- extremely compact solution
- job site clean
- automated management
- saving costing
- saving energy

BENTONITE MUD

Detritus management



SMT-500
Single or double stage mud for large job site (*Hydromill, TBM*)



DESANDER & MUD TREATMENTS		stage	structure	cut point D50 μm	installed power kW	feeding capacity * m^3/h
SMT-500		single double	modular assembly	60 60/20	52,4 97,4	500
DETRITUS MANAGEMENT			structure	discharge flow $\text{m}^3/1'$	storage capacity m^3	
SDM-35			portal	3 (approx.)	35	

BENTONITE MUDS

Mixers, Desander & Mud Treatments



BE-50
Single stage mud treatment
unit for little job site

BATCH MIXERS	version	structure	volum batch dm ³	mixing capacity * m ³ /h
BE-10	manual	skid	1000	10
SBT-8	manual	skid	250	8
SBT-12	automatic	protected skid	250	12
SBT-30	automatic	protected skid	1250	30

* Mixing capacity is determined with 50 kg bentonite for 1 m³ slurry

DESANDER & MUD TREATMENTS	stage	structure	cut point D50 μm	installed power kW	feeding capacity * m ³ /h
BE-50	single	skid	60	11,5	50
SD-70	single	skid	60	15	70
SD-100	single	skid	60	18	100
SD-150	single double	skid	60 60/35	24 48	150
SD-180	single double	skid	60 60/35	28 54	180
SD-250	single double	skid	60 60/35	48 75	250

* Feeding capacity is determined on water

GROUT MIXING PLANT

Mixers and Stirrers



SGT-45
High performance
turbomixing unit



SGA-100
High performance
stirrer

BATCH MIXERS	version	structure	batch volume dm ³	mixing capacity * m ³ /h
SGT-6	manual	skid	250	6
SGT-12	automatic	procted skid	250	12
SGT-30	automatic	procted skid	1250	30
SGT-45	automatic	procted skid	2000	45

* mixing capacity is determined on C/W=1 (density 1,5 t/m³).

STIRRERS	structure	integrated booster pump n°	mixing axis n°	capacity m ³
SGA-5	skid	-	1	0.5
SGA-10	skid	-	1	1.0
SGA-30	skid	1 (optional)	1	3.0
SGA-45	skid	1 (optional)	1	4.5
SGA-100	skid	2 (optional)	2	10.0



SGM-45

High performance
automatic mixing unit

CONTAINERIZED GROUTING UNITS	upper silos n° x m ³	integrated pump n°	batch volume dm ³	mixing capacity * m ³ /h
GM-22	2 x 18 m ³ (std.)	-	800	22
SGM-30	2 x 27 m ³ (opt.)	1 (opt.)	1250	30
SGM-45	2 x 27 m ³ (opt.)	1 (opt.)	2000	45

GROUT MIXING PLANTS

Injections

SGJ-8x3.12

on "Manfredonia" job site



INJECTORS	installed power kW	bore piston mm	piston stroke mm	delivery rate max dm ³ /1'	delivery press. max bar
GP-12	15	50 to 90	280	37 to 120	200 to 62
SGP-3.12	5.5	80	200	30	70/120
SGP-8.12	18	110	350	80	70/120
SGP-20.5	22	80 to 160	330	75 to 360	150 to 35
SGP-14.15	45	90 or 100	330	100 or 140	200 or 150

INJECTIONS PLANT	structure	batch volume dm ³	version mixer	storage stirrer m ³	stirrer n°	injector type	injector n°
GS-1	skid	285	manual	0.45	1	GP-12	1
SGJ series	procted skid or containerized	250	manual (SGT-6m)	0.5 (SGA-5)	1 or 2	SGP-3.12	up to 8
			or automatized (SGT-12)	1.0 (SGA-10)	1 or 2	SGP-8.12	
			-	-	-	SGP-20.5 SGP-14.15	up to 8



SGP-20.5
duplex pump for
transfer mixture

INJECTIONS

High Pressure Pumps



The 7T-600J can be equipped with the DRILLING MATE SYSTEM (DMS) on 10" touch screen for monitoring and control of the operating parameters.

Additional DMS optional features: remote control.

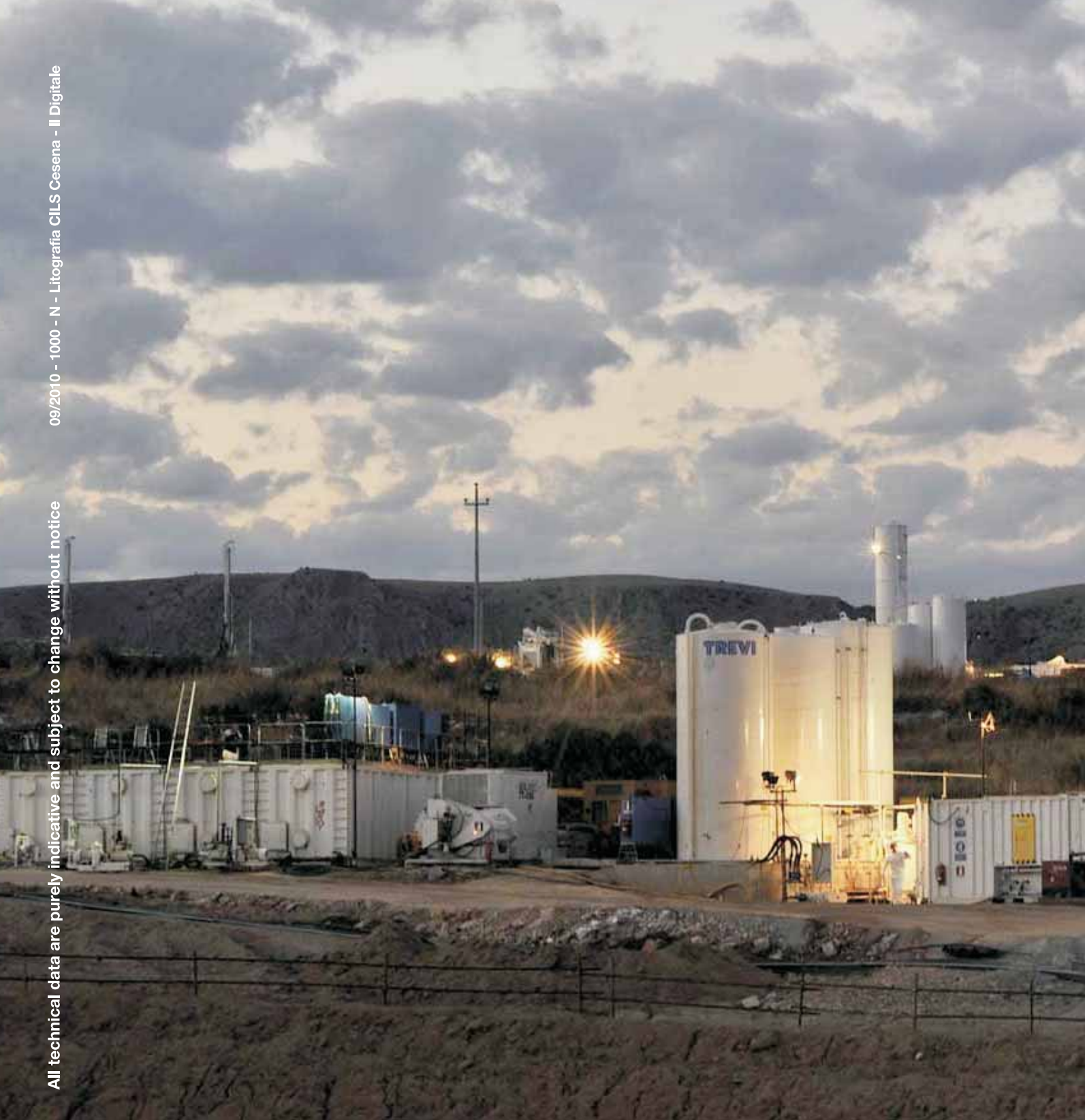


	linea size in	stroke in	max output press bar	max delivery lt/min	nominal power kW	weight (approx.) kg
7T-505J	3-3 $\frac{1}{2}$ -4	7	900	599	373	14000
7T-600J	3 $\frac{1}{2}$ -4-4 $\frac{1}{2}$	7	800	760	447	14700
7T-800J	3 $\frac{1}{2}$ -4-4 $\frac{1}{2}$ -4 $\frac{3}{4}$	7	750	614	597	23000

High pressure triplex pumps are designed to perform mono, bi or triple fluids jet grouting technology.

Possibility to be supplied with different gear box.





SOILMEC distributes machinery and structures all over the world, supported by SOILMEC subsidiary companies and dealers. The complete Soilmec network list is available on the webpage www.soilmec.it